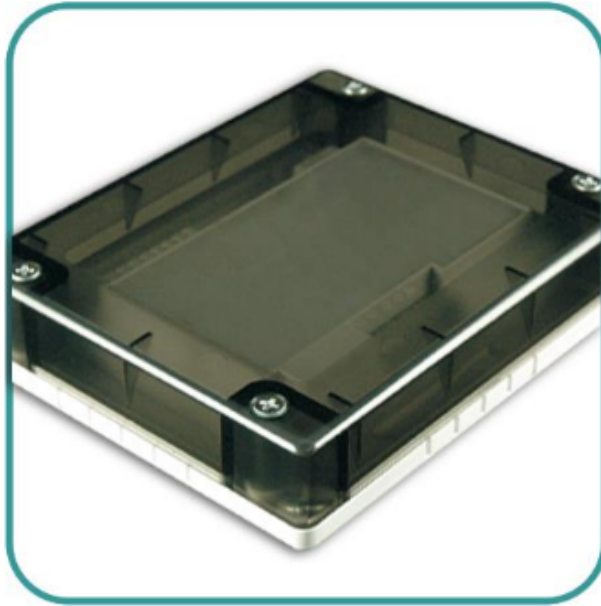


CHQ Box Sub Assembly

CHQ-SUB



Features

- ▶ Robust design
- ▶ Compatible with all CHQ Modules
- ▶ Used to replace damaged components

Description

The CHQ-SUB Assembly is a set of replacement components designed to fit any of the existing CHQ Modules: CHQ-DIM(SCI), CHQ-SZM(SCI), CHQ-DZM(SCI), CHQ-DSC(SCI), CHQ-MRC(SCI), CHQ-DRC(SCI), CHQ-ISM and CHQ-PCM.

The sub-assembly consists of the PCB tray, PCB cover and semi-opaque lid and can be used in cases where an existing module housing becomes damaged and needs replacement.

Specification

Ordering Code	CHQ-SUB
Dimensions (mm)	L=157 x W=127 x D=35 (module inc lid)
Colour and Enclosure Material	PCB tray & PCB cover – White ABS Module Lid – Semi Opaque Black ABS (white version – CHQ-LID(WHT) also available)

For more information on these products, please contact:



T: 00353 47 86274 / 00353 47 86663

E: Sales@irishsafetysystems.ie