



## 90° SWEEPING BEND

(ABS001 - 25mm)

Designed for changing the direction of a pipe run a degree's on an aspirating smoke detection pipe network. Pipe is designed for aspirating fire detection only.

### Installation Instructions:

Use the correct solvent Plusbond 3019.

Do not paint.

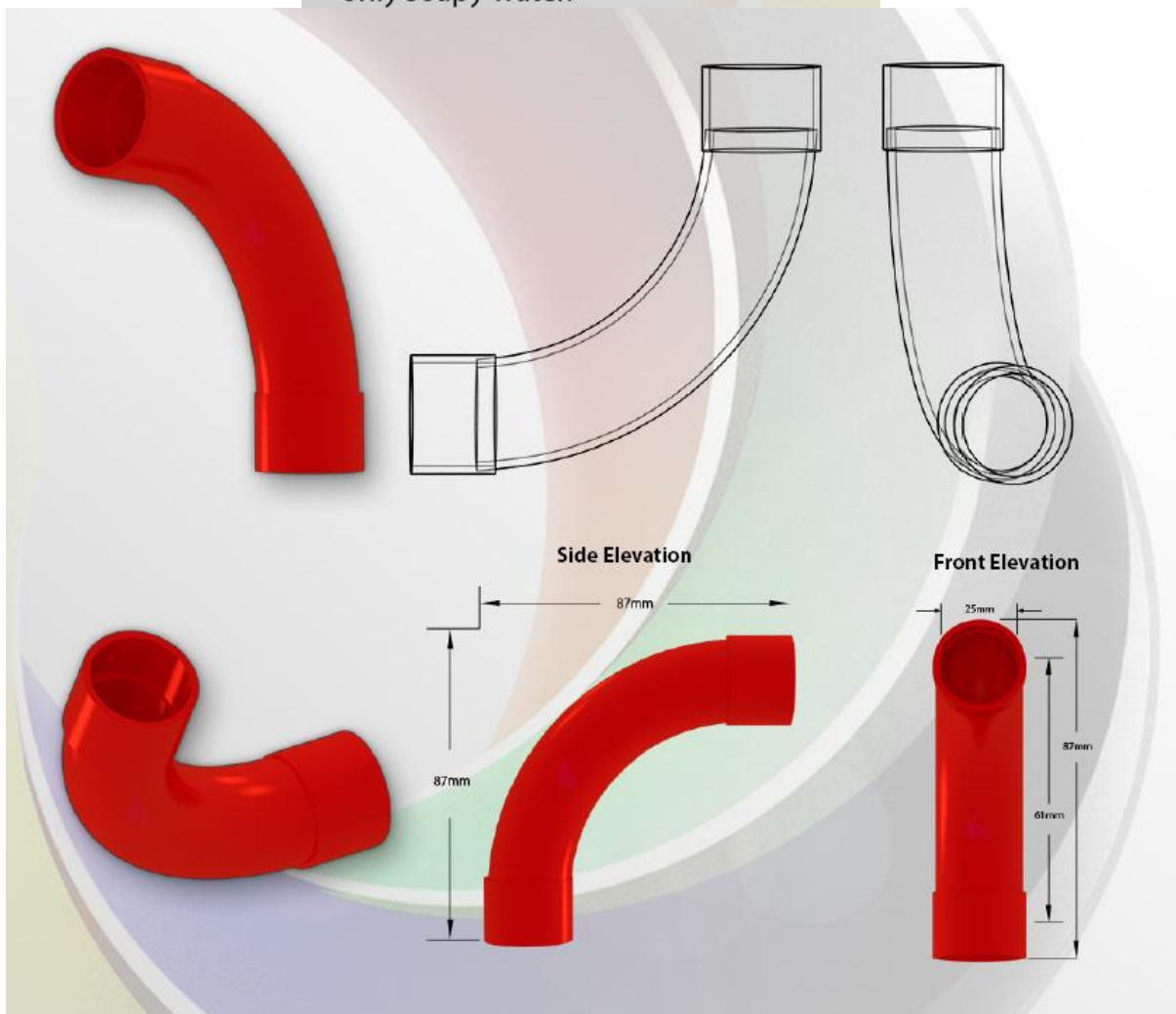
Keep pipe clean and free from dust.

Do not install in direct sunlight.

Only install with approved pipe.

Do not use solvents to clean,

only soapy water.



## 45° DEGREE BEND

(ABS002 - 27mm)

Designed for changing the direction of a pipe run a degree's on an aspirating smoke detection pipe network. Pipe is designed for aspirating fire detection only.

### Installation Instructions:

Use the correct solvent Plusbond 3019.

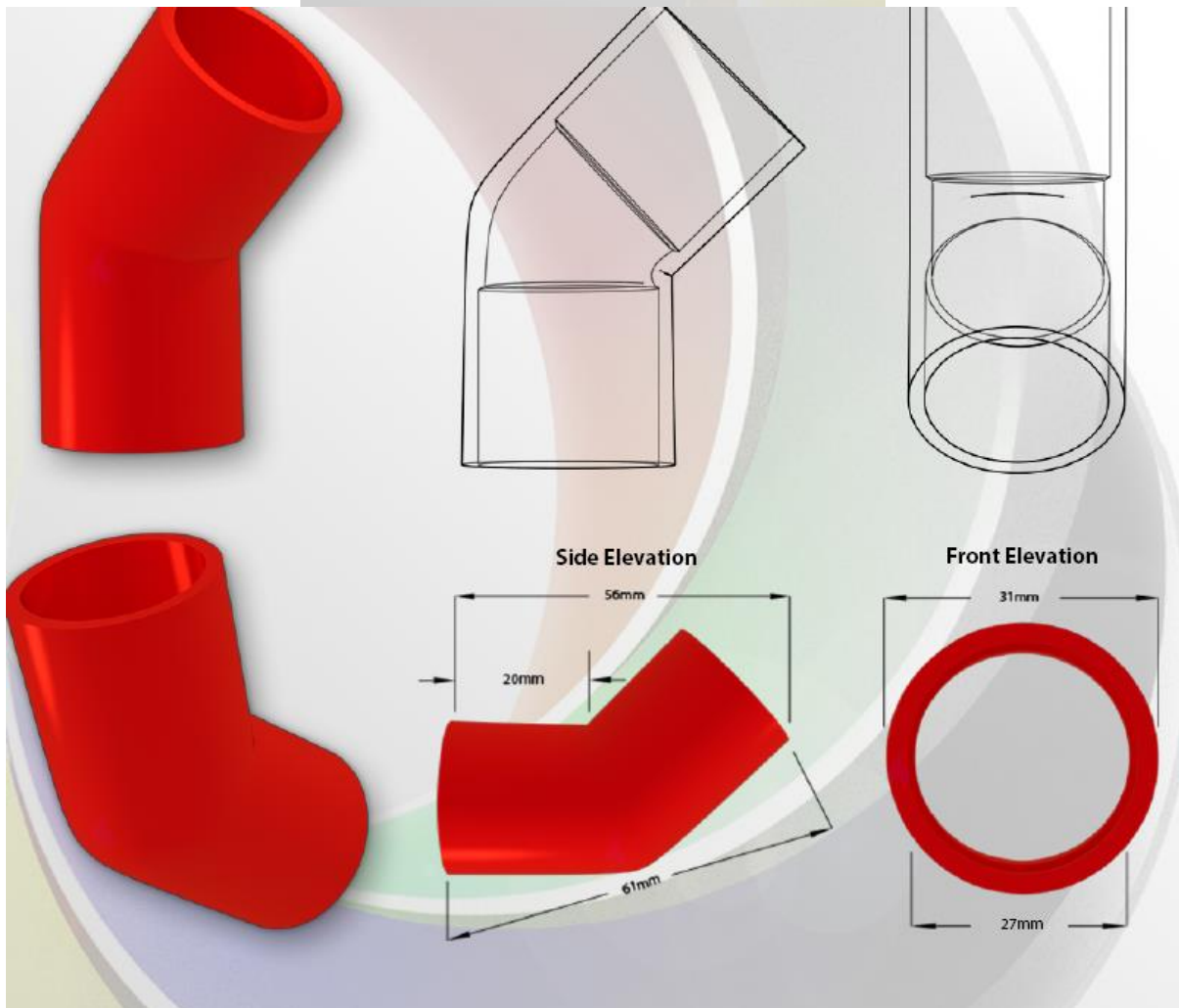
Do not paint.

Keep pipe clean and free from dust.

Do not install in direct sunlight.

Only install with approved pipe.

Do not use solvents to clean, only soapy water.



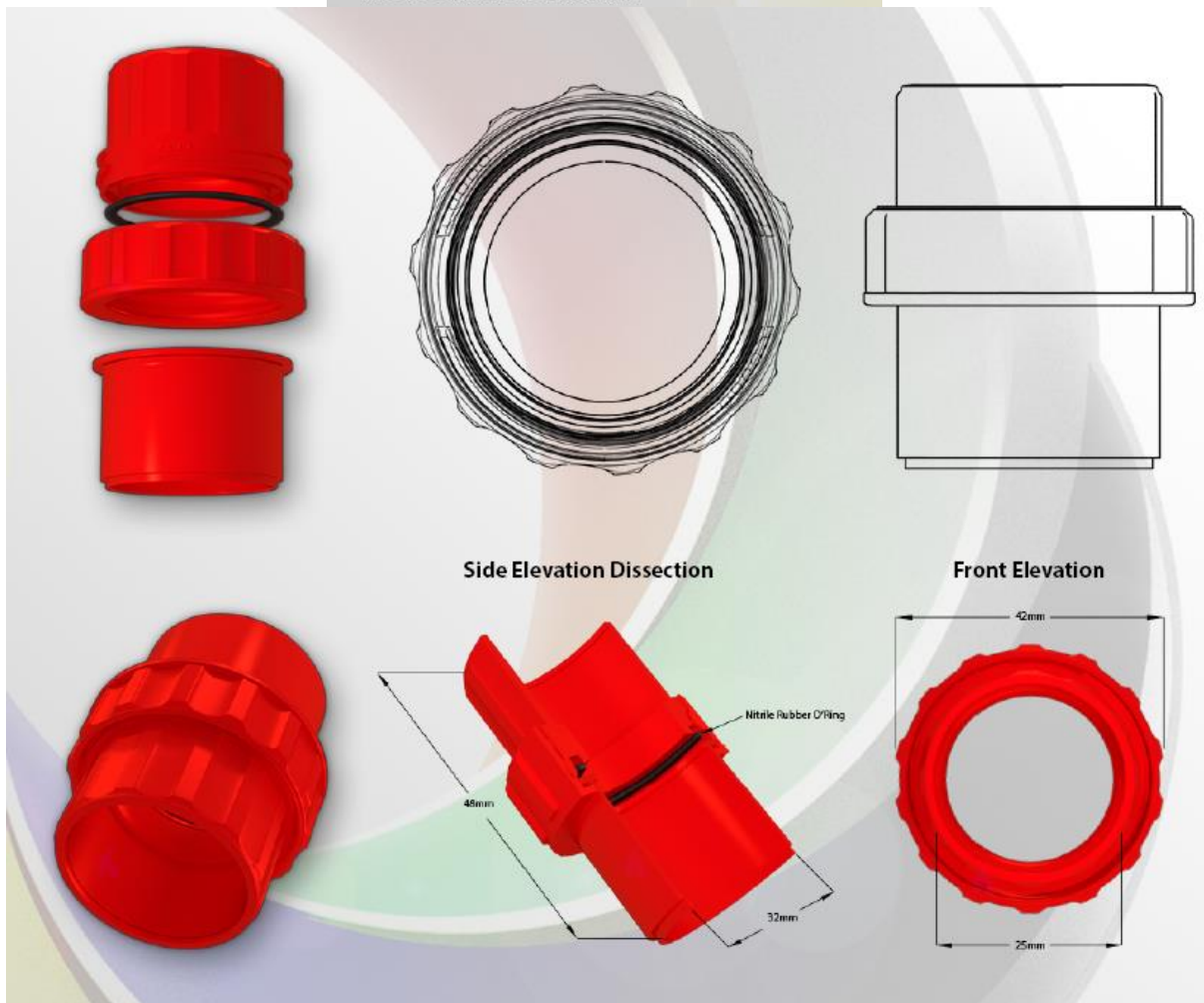
# SOCKET UNION

(ABS003 - 25mm)

Used for breaking a section of aspirating smoke detection pipe network for maintenance purposes.  
This device is designed for aspirating fire detection only.

### Installation Instructions:

Use the correct solvent Plusbond 3019.  
Do not paint.  
Keep pipe clean and free from dust.  
Do not install in direct sunlight.  
Only install with approved pipe.  
Do not use solvents to clean, only soapy water.  
Do not over tighten.  
Keep O'Ring in place.  
Ensure that the socket union locks into position when tightening.



## PIPE CLIP

(ABS004 - 25/27mm)

Aspirating smoke detection pipe clip, Designed to support both 25mm and 27mm aspirating detection smoke pipe. The clip has a flexible side wall which allows the clip to open wide enough to allow the pipe to be placed within its circular cavity. The clip secures the pipe when closed. The clip can be reopened by using a flat edged tool to wedge open the top of the clip which release the pipe. Please note that more the clip is opened and closed, slight discoloration may appear on the side wall

### Installation Instructions:

For use to fix to any flat surface (Wall, Ceiling, Floor etc.)

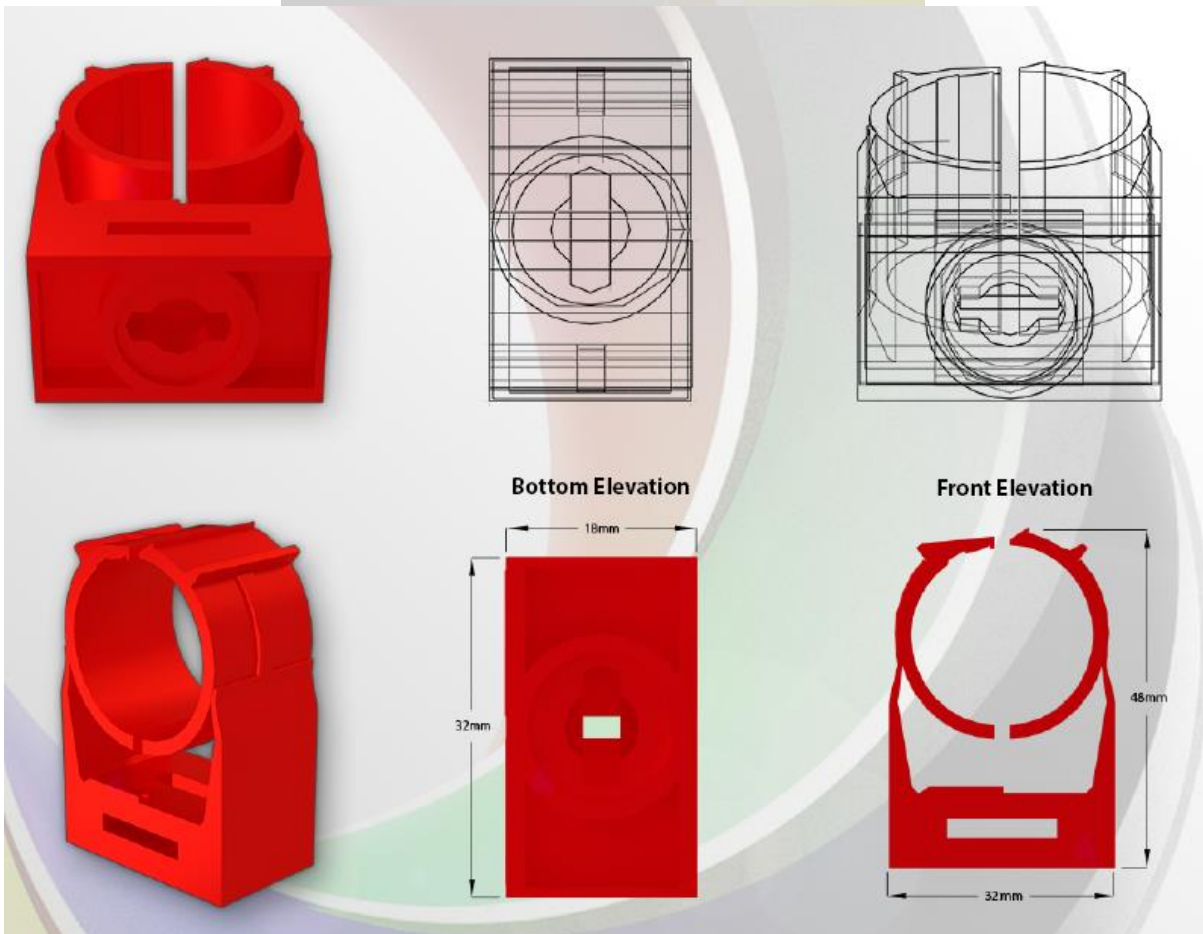
Do not install in direct sunlight.

Pipe clips are required every 800mm along the length of pipe.

Only install with approved fittings and EN54-20 ABS Pipe.

Do not use solvents to clean, only soapy water.

When ambient temperatures are outside 15°C-25°C use pipe expansion joints.



## JOINTING SOCKET

(ABS005 - 25mm)

Connects two pieces of aspirating smoke detection pipe together. This device is designed for aspirating fire detection only.

### Installation Instructions:

Use the correct solvent Plusbond 3019.

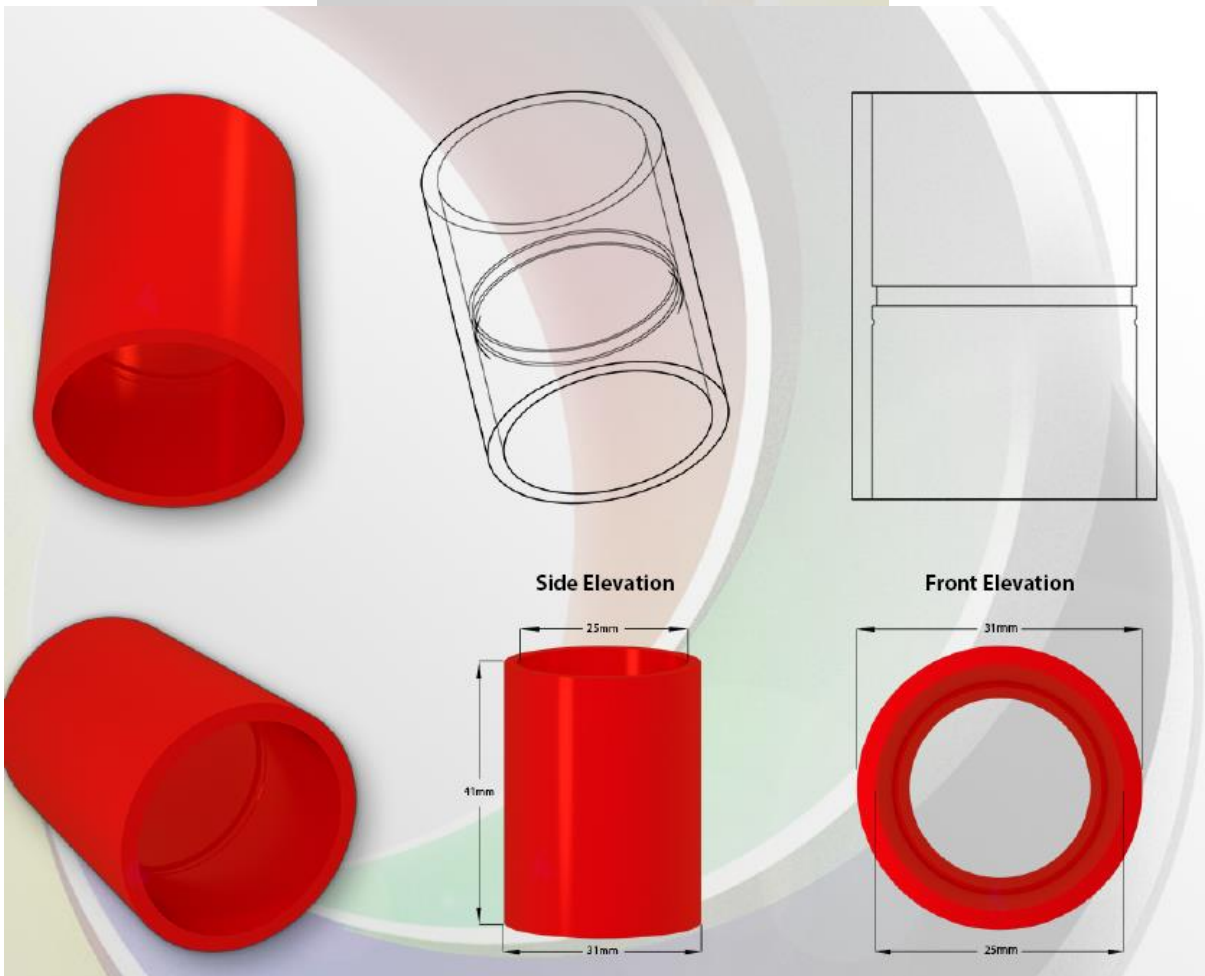
Do not paint.

Keep pipe clean and free from dust.

Do not install in direct sunlight.

Only install with approved pipe.

Do not use solvents to clean, only soapy water.



# TEE PIECE

(ABS006 - 25mm)

This device is used when a "Bull nose" or "Side tee" flow split is required.  
This device aspirating fire detection only

## Installation Instructions:

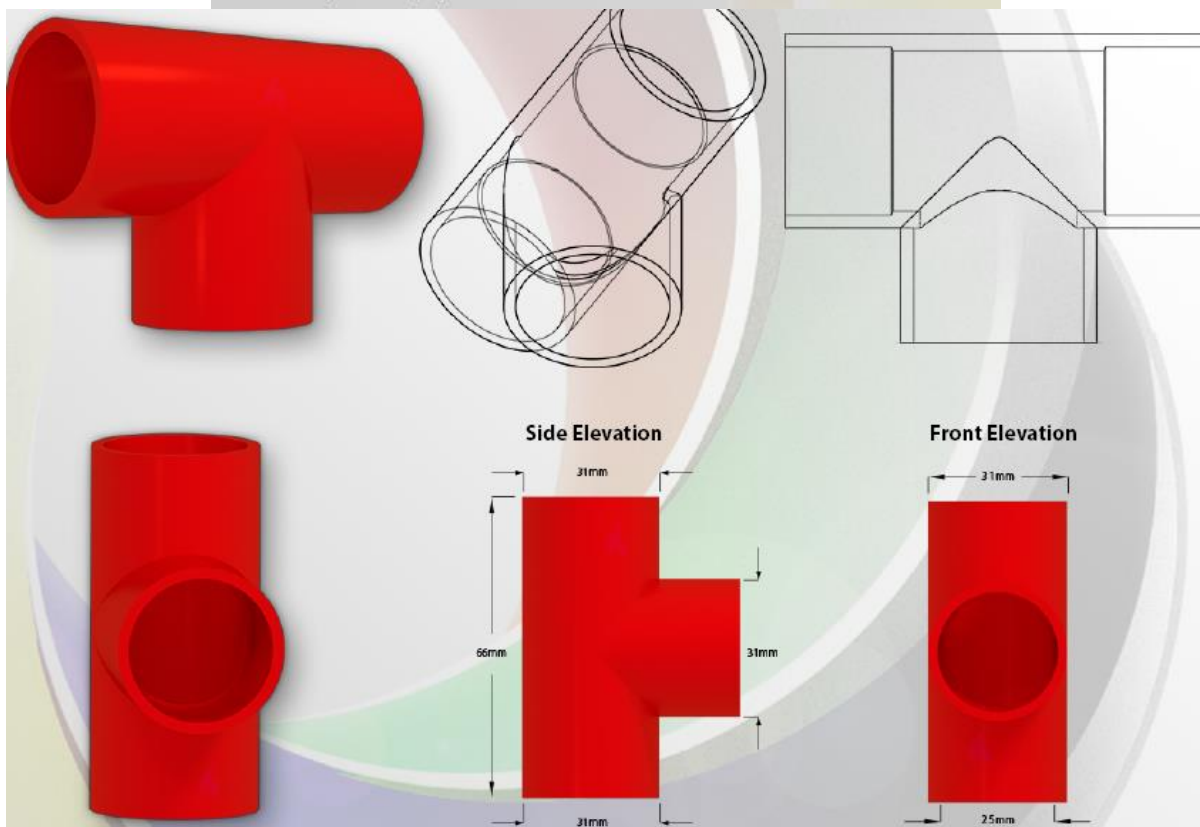
Do not paint.

Keep pipe clean and free from dust.

Do not install in direct sunlight.

Only install with approved pipe and fittings.

Do not use solvents to clean, only soapy water.



## END CAP

(ABS007/25 - 25mm)

Used at the end of a pipe run to seal the system.

### Installation Instructions:

Use the correct solvent Plusbond 3019.

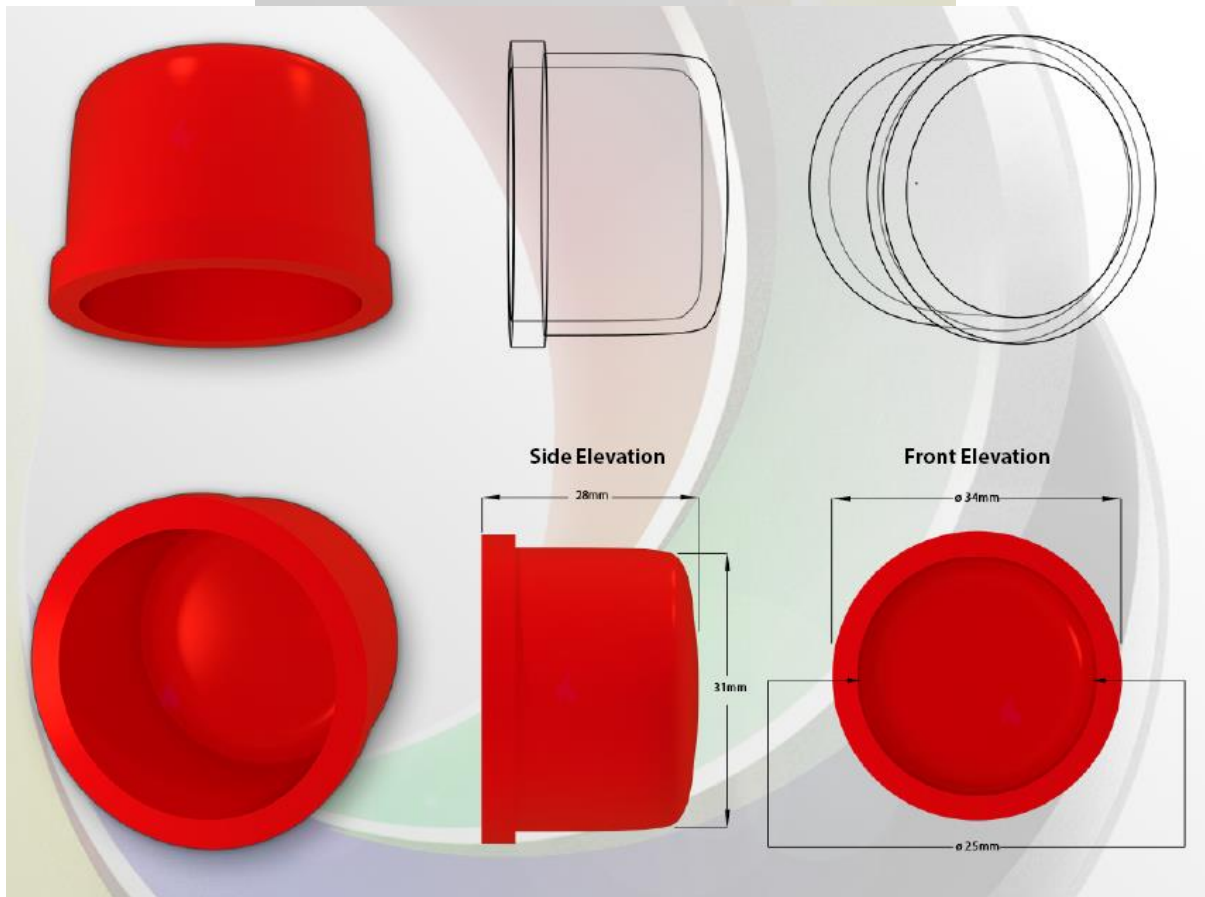
Do not paint.

Keep pipe clean and free from dust.

Do not install in direct sunlight.

Only install with approved pipe.

Do not use solvents to clean, only soapy water.



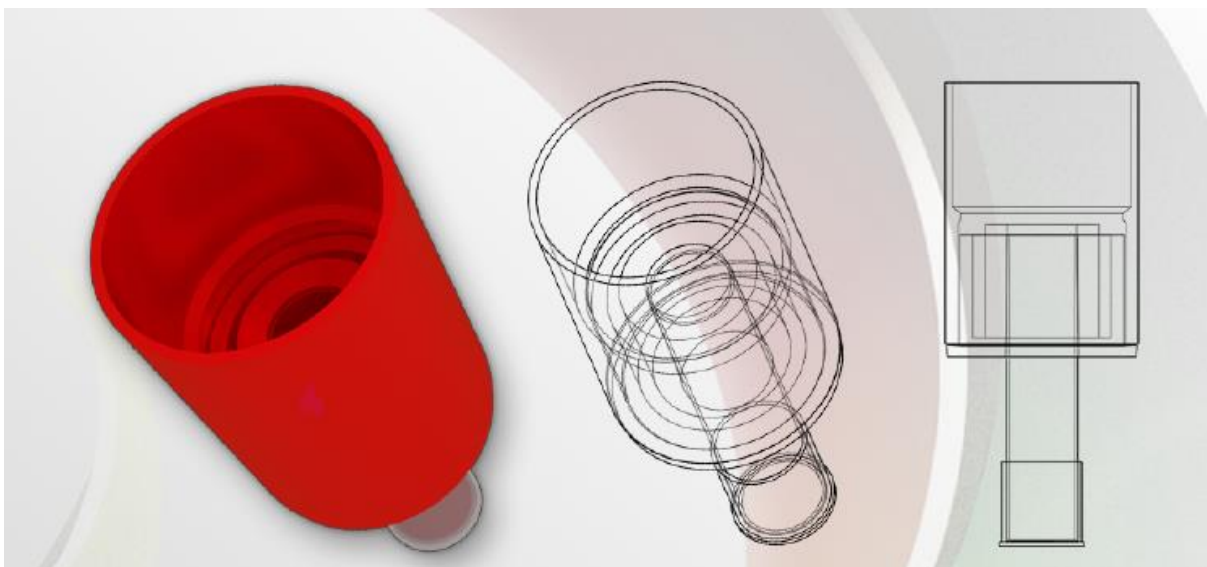
# TEST POINT

(ABS021-TP - 25mm)

Used when the system has to be periodically tested.  
Simply remove the protection cap.  
Test and replace.

## **Installation Instructions:**

Use the correct solvent Plusbond 3019.  
Do not paint.  
Keep pipe clean and free from dust.  
Do not install in direct sunlight.  
Only install with approved pipe.  
Do not use solvents to clean,  
only soapy water.





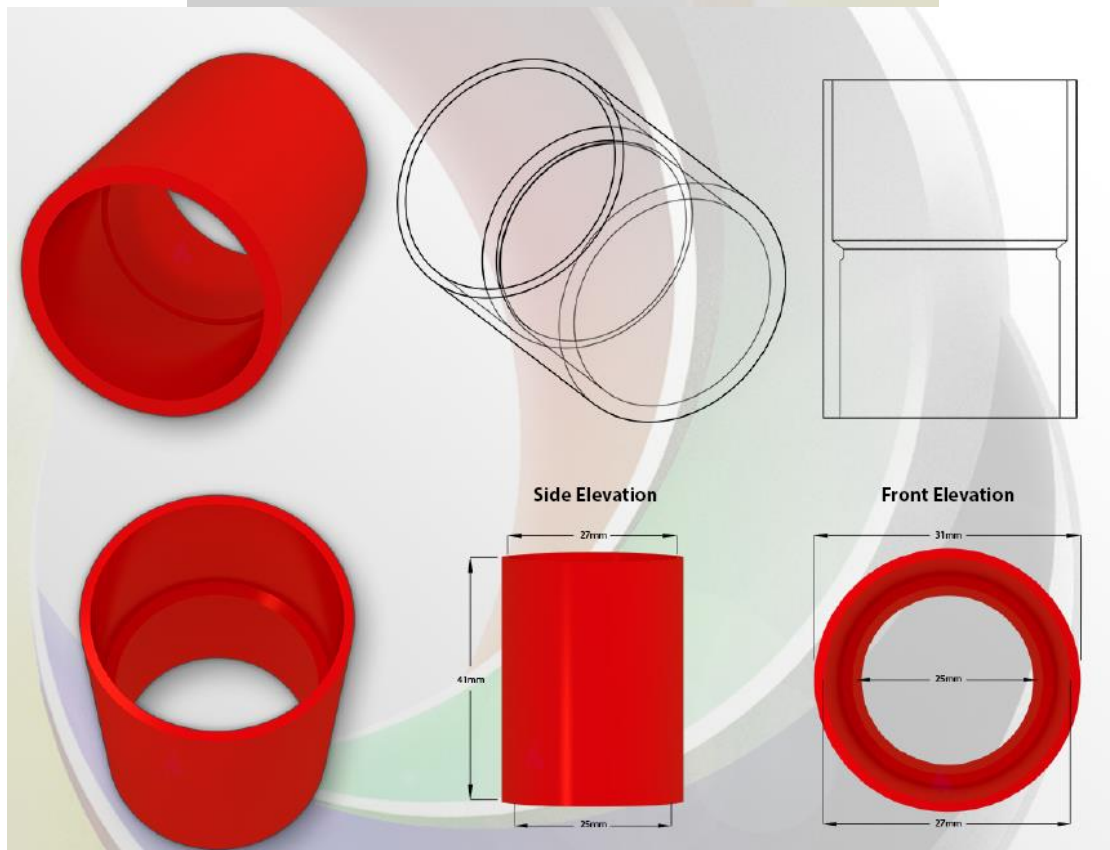
# ADAPTOR 25-27mm

(ABS005-1)

Connects two pieces of aspirating smoke detection pipe of different sizes 25mm to 27mm (Visa Versa). This device is designed for aspirating fire detection only.

## Installation Instructions:

Use the correct solvent Plusbon 3019.  
Do not paint.  
Keep pipe clean and free from dust.  
Do not install in direct sunlight.  
Only install with approved pipe.  
Do not use solvents to clean, only soapy water.



# ABS PIPE

(ABS008/25 - 25mm)

3 Meter ABS 25mm aspirating smoke detection pipe EN54 - 20 Approved.  
Pipe is designed for aspirating fire detection only.

## Installation Instructions:

Do not bend the pipe.

Do not paint.

Keep pipe clean and free from dust.

Do not install in direct sunlight.

Pipe clips are required every 800mm

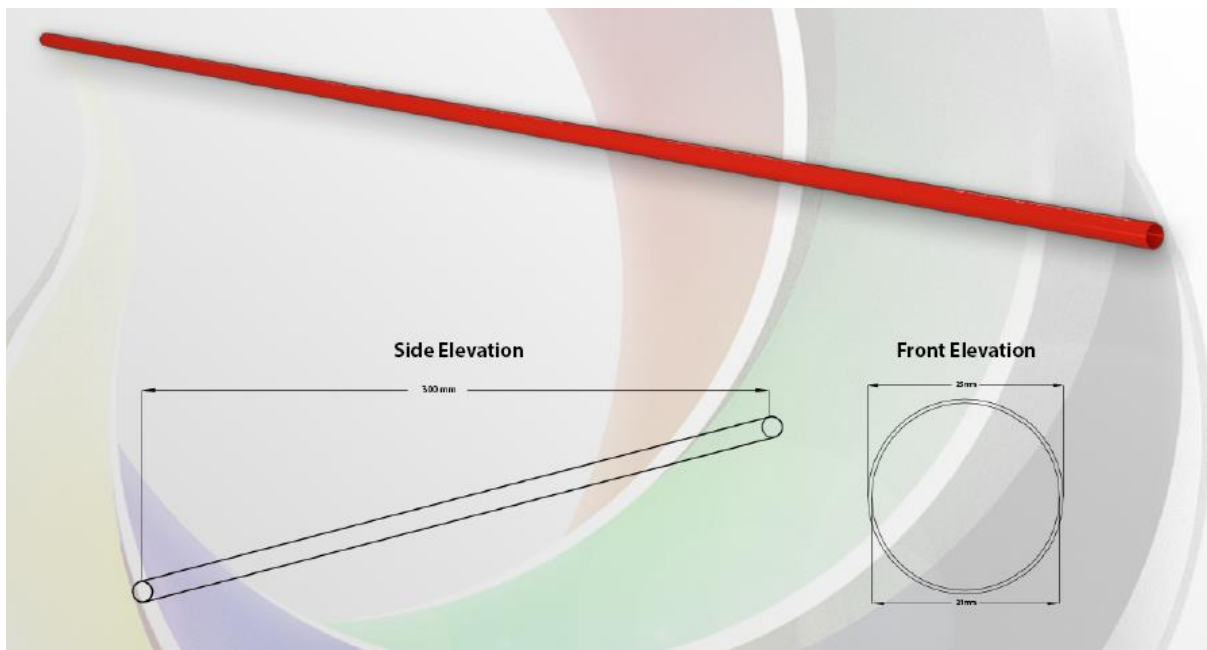
Only install with approved fittings.

Do not use solvents to clean,  
only soapy water.

Only use approved pipe plastic cutters  
to cut the pipe.

Ensure that pipe cutters are sharp.

When ambient temperatures outside are  
15°C to 25°C use pipe expansion joints.



For more information on these products, please contact us:



T: 00353 47 86274 / 00353 47 86663

E: Sales@irishsafetysystems.ie