

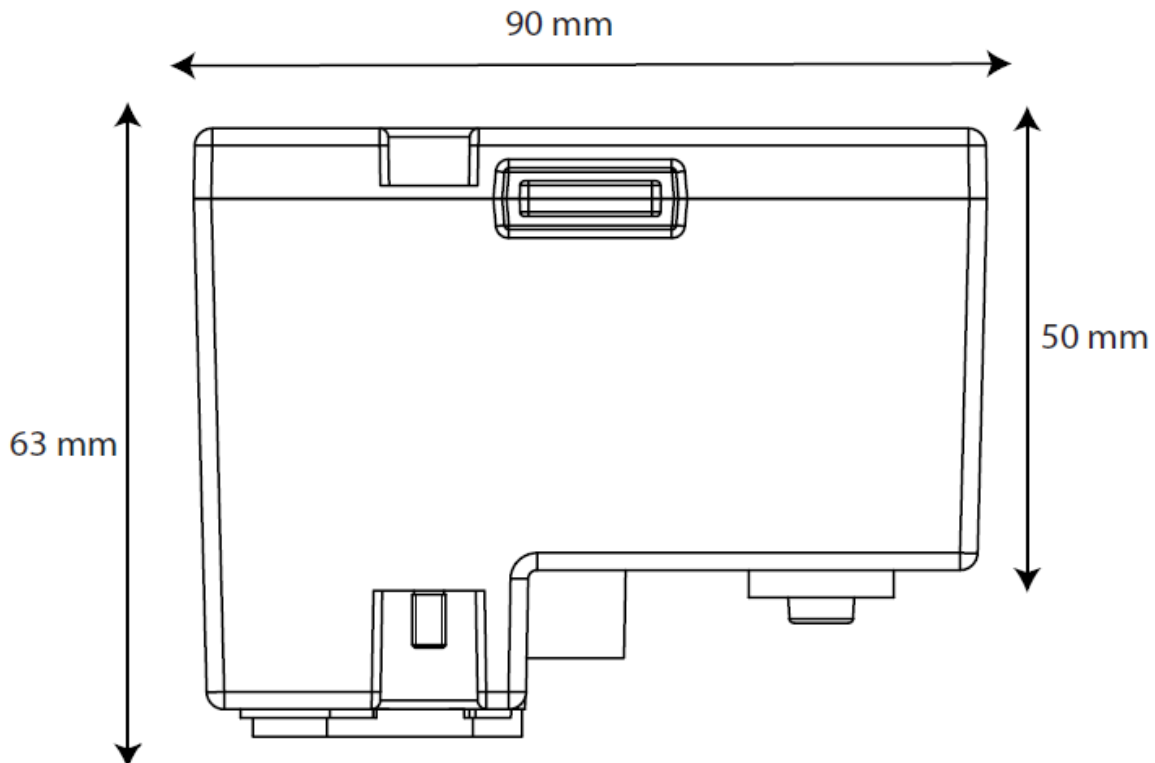
VESDA[®]

Filter Cartridge

VSP-005 & VSP-025



The VESDA replacement filter cartridge (VSP-005 for single units and VSP-025 for a pack of 20) is used to replace filter cartridges in VESDA VLC, VLF, VLP and VLS detectors.



Features

- Easy swap replacement filter
- Fits VLC, VLF, VLP and VLS VESDA detectors
- Available singly or in packs of 20
- Two Stage Filtration
 - First stage removes particles in excess of 20 microns
 - Second stage is ultra-fine and removes more than 99% of particles of 0.3 microns or larger to provide a clean air barrier for optics protection

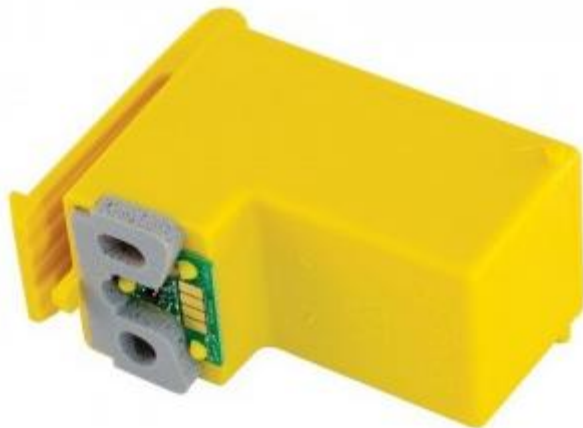
Dimensions

90 mm x 63 mm x 30 mm
(3.5 in. x 2.5 in. x 1.2 in.)



Vesda VSP-031 Secondary Filter for VLI Range

Secondary filter for use with the VLI range of early warning smoke detectors.



Vesda-E VSP-962 Spare Replacement Filter (Singular)

The VESDA-E detector uses a two-stage filter to protect the optics of the detection head. The filter is made in a compact construction and is intended for single use. The filter removes dust and other dirt from the sucked air creating a protective barrier for the optics.

The detector monitors the filter filling. The filter should be replaced at least every 2 years or if the filter has previously been filled in accordance with the message. In environments with significant air pollution, it may be necessary to replace the filter more frequently, which should be determined individually based on information from the detector.

A properly configured system will remind the user to change the filter, reporting on zone detectors / filter damage on all detectors connected to the given detector. Damage is reported if:

- the dust meter will exceed the programmed limit
- the system clock will indicate the date on which the filter replacement occurs
- The replacement period is calculated based on the date of the last filter replacement and data in the detector configuration

Vesda-E VSP-962-20 Spare Replacement Filter (Pack of 20)

The VESDA detector uses a two-stage filter to protect the optics of the detection head. The filter is made in a compact construction and is intended for single use. The filter removes dust and other dirt from the sucked air creating a protective barrier for the optics.

The detector monitors the filter filling. The filter should be replaced at least every 2 years or if the filter has previously been filled in accordance with the message. In environments with significant air pollution, it may be necessary to replace the filter more frequently, which should be determined individually based on information from the detector.

A properly configured system will remind the user to change the filter, reporting on zone detectors / filter damage on all detectors connected to the given detector. Damage is reported if:

- the dust meter will exceed the programmed limit
- the system clock will indicate the date on which the filter replacement occurs
- The replacement period is calculated based on the date of the last filter replacement and data in the detector configuration

For more information on these products, please contact us:



T: 00353 47 86274 / 00353 47 86663

E: Sales@irishsafetysystems.ie